



SPRING 2025 PRODUCT CAPTIONS

The Susan Ferrier Collection

The Susan Ferrier Collection for Baker Furniture takes the most powerful forces from the natural world—tectonic shifts, flowing magma, and volcanic eruptions—and harnesses that power to inspire stunning furniture for the living room, dining room and bedroom. Alive with timeless energy and organic materiality, the collection incorporates cast bronze, oak, leathered stone, polished marble, shagreen and onyx to create pieces that are at one with the natural world. Just as the discovery of Pompeii and Herculaneum changed our understanding of history, this collection will redefine how ancient traditions and natural forces can influence modern living today.



BAA5758, Minoan Accent Table (mi-noh-uhn)

Designed to resemble the water and wine vessels used in the ancient Minoan civilization, the Minoan Accent Table features a reflective wood surface and a bronze base with elegant curves. The piece seamlessly integrates ancient inspiration in both material and form, designed to pair beautifully with the Akrotiri Accent Table.

Standard Finish: Element Top with Anneal and Hraun Base
Optional Finishes: Finish Program (Tier 1, Tier 2, Tier 3 and Tier 4)



BAA5759, Etruscan Accent Table (ih-truhs-kuhn)

The Etruscan Accent Table carries on the legacy of the ancient civilization in its use of shapely pottery and attention to detail that has inspired Italian design for centuries. The table features a polished Namibia White marble top with a bronze neck and base and layers well with the Cyclades Accent Table.

Standard Finish: Polished Namibia White Marble Top with Temper and Hraun Base



BAA5760, Akrotiri Accent Table (ak-roh-teer-ee)

Inspired by the design of ancient vessels used to carry water and oils, the Akrotiri Accent Table boasts a fluid and curvaceous silhouette. Its bronze base and neck are paired with an oak top in an expression of timeless beauty. This distinctive piece is designed to pair beautifully with the Minoan Accent Table.

Standard Finish: Element Top with Anneal and Hraun Base
Optional Finishes: Finish Program (Tier 1, Tier 2, Tier 3 and Tier 4)





BAA5761, Cyclades Accent Table (sik-luh-deez)

Inspired by the shaping of the amphora, the iconic Greek jar, the Cyclades Accent Table pairs a bronze base with a polished Namibia White marble top. The table is named to honor an ancient people known for their seafaring trade throughout the Greek islands. This table is designed to layer seamlessly with the Etruscan Accent Table.

Standard Finish: Polished Namibia White Marble Top with Temper and Hraun Base



BAA5762, Crete Side Table (kreet)

The influence of the natural world is evident throughout the Crete Side Table. This two-tiered design features twin surfaces in leathered Belgian Bluestone suspended by legs forged in deep bronze. The table takes its name from the ancient civilization of Crete, where the geography was constantly reshaped by the earth's forces.

Standard Finish: Leathered Belgian Bluestone Top and Shelf with Anneal Legs



BAA5763, Knossos Side Table (nos-uhs)

The Knossos Side Table is at one with the natural world, both in its design cues and its materiality. This two-tiered table features twin surfaces in leathered Belgian Bluestone suspended by legs forged in bronze. The table takes its name from the ancient Minoan civilization, which was partially destroyed by the volcanic eruption that created modern Santorini.

Standard Finish: Leathered Belgian Bluestone Top and Shelf with Temper Legs



BAA5765, Laki Side Table (lah-kee)

The Laki Side Table is inspired by an Icelandic mountain of the same name, which is bisected by a volcanic fissure and features beautifully sloping topography. This oak veneered piece features cast bronze accents and a molten inspired base that nods to the fluid energy of lava.

Standard Finish: Smolder with Magma Accents
Optional Finishes: Finish Program (Tier 1, Tier 2, Tier 3 and Tier 4)





BAA5766, Vulcan Side Table (vuhl-kuhn)

The Vulcan Side Table features a bronze detail with the fluid energy of lava, supporting an oak veneered tabletop to express both strength and natural elegance. It draws inspiration from multiple sources, including the Roman god of fire and the 600-foot volcano that rises from the New Mexico desert.

Standard Finish: Smolder with Magma Accents

Optional Finishes: Finish Program (Tier 1, Tier 2, Tier 3 and Tier 4)



BAA5750, Tectonic Plate Cocktail Table 1 (tek-ton-ik)

The Tectonic Plate Cocktail Table 1 is inspired by the overlapping and converging tectonic plates that have created most of the world's volcanoes. Just as layers of earth interplay in the natural world, the table's layers of molten magma and oak stylishly alternate. This uniquely inspired piece can be grouped with other Tectonic Plate Cocktail Tables or styled as a standalone item.

Standard Finish: Smolder with Magma Accents

Optional Finishes: Finish Program (Tier 1, Tier 2, Tier 3 and Tier 4)



BAA5751, Tectonic Plate Cocktail Table 2 (tek-ton-ik)

The Tectonic Plate Cocktail Table 2 is inspired by the overlapping and converging tectonic plates that have created most of the world's volcanoes. Just as layers of earth interplay in the natural world, the table's layers come together to form a new creation. This uniquely inspired piece can be grouped with other Tectonic Plate Cocktail Tables or styled as a standalone item.

Standard Finish: Smolder with Magma Accents

Optional Finishes: Finish Program (Tier 1, Tier 2, Tier 3 and Tier 4)



BAA5752, Tectonic Plate Cocktail Table 3 (tek-ton-ik)

The Tectonic Plate Cocktail Table 3 is inspired by the overlapping and converging tectonic plates that have created most of the world's volcanoes. Just as layers of earth interplay in the natural world, the table's layers of molten magma and oak stylishly alternate. This uniquely inspired piece can be grouped with other Tectonic Plate Cocktail Tables or styled as a standalone item.

Standard Finish: Smolder with Magma Accents

Optional Finishes: Finish Program (Tier 1, Tier 2, Tier 3 and Tier 4)





BAA5754, Crete Oval Cocktail Table (kreet)

Harkening back to the ancient civilization of Crete, where the geography was constantly reshaped by the earth's forces, the Crete Oval Cocktail Table embraces natural materials to create a distinctive two-tiered design. Twin oval surfaces showcase an oak veneered top and shelf and are suspended by legs forged in deep bronze.

Standard Finish: Scorch Top and Shelf with Anneal Legs
Optional Finishes: Finish Program (Tier 1, Tier 2, Tier 3 and Tier 4)



BAA5755, Knossos Oval Cocktail Table (nos-uhs)

The Knossos Oval Cocktail Table is an artistic take on modern design and natural materiality. This two-tiered table features an oak veneered shelf and tabletop, suspended by legs forged in bronze. The piece is named after a key city of the ancient Minoan civilization, which was partially destroyed by volcanic eruptions.

Standard Finish: Scorch Top and Shelf with Temper Legs
Optional Finishes: Finish Program (Tier 1, Tier 2, Tier 3 and Tier 4)



BAA5756, Crete Rectangle Cocktail Table (kreet)

The Crete Rectangle Cocktail Table embraces natural materials to create a distinctive two-tiered design. Twin surfaces showcase an oak veneered top and shelf and are suspended by legs forged in bronze. The table takes its name from the ancient civilization of Crete, where the geography was constantly reshaped by the earth's forces.

Standard Finish: Scorch Top and Shelf with Anneal Legs
Optional Finishes: Finish Program (Tier 1, Tier 2, Tier 3 and Tier 4)



BAA5757, Knossos Rectangle Cocktail Table (nos-uhs)

Like the ruins of its namesake city, the Knossos Rectangle Cocktail Table feels structural and intentional, displaying a comfort and familiarity with the natural world. The table features oak veneered surfaces and legs forged in bronze, offering an artistic take on modern design and materiality.

Standard Finish: Scorch Top and Shelf with Temper Legs
Optional Finishes: Finish Program (Tier 1, Tier 2, Tier 3 and Tier 4)



BAA5764, Pele Console (peh-leh)

Named after the Hawaiian goddess of volcanoes and fire, the Pele Console is crafted with a structural ombre bronze base with a polished Namibia White marble tray top. Like the dynamic beauty created by a volcanic eruption, the console reflects an unexpected and striking design.

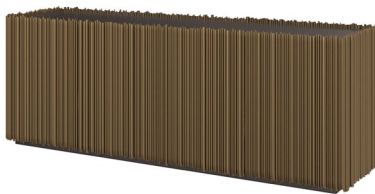
Standard Finish: Polished Namibia White Marble Top with Flow Base



BAA5767, Feldspar Console (feld-spahr)

The Feldspar Console is the crystallization of a simple design concept: the pairing of stone and metal, similar to what is created after volcanic magma meets natural rocks and minerals. The console's bronze base interplays with a leathered Belgian Bluestone top, edged with a corduroy texture that evokes the layering of rocks in the natural world.

Standard Finish: Leathered Belgian Bluestone Top with Haze Base



BAA5728, Lahar Sideboard (lah-hahr)

The smooth, vertical lines of the Lahar Sideboard are inspired by the soil and water that flow down the faces of volcanoes. This captivating, uninterrupted doweled form conceals multiple shelves and distinct storage spaces.

Standard Finish: Hraun



BAA5787, Forge Desk (fohrj)

The Forge Desk is a testament to the strength and versatility of metal, offering functionality with a modern and commanding presence. A tower of starphire glass shelves complement its bronze base and frame, with bronze hardware as the finishing touch.

Standard Finish: Smolder with Magma Base and Hraun Hardware, featuring Haze Accents

Optional Finishes: Finish Program (Tier 1, Tier 2, Tier 3 and Tier 4)





BAA5795, Crete Etagere (kreet)

Shaped by the earth's ever-changing forces, the ancient civilization of Crete evolved with nature and geology. That spirit lives on in the Crete Etagere, which features a collection of natural materials including veneered oak tiers and a metal frame made from sculpted, cast bronze.

Standard Finish: Scorch Shelves with Anneal Legs

Optional Finishes: Finish Program (Tier 1, Tier 2, Tier 3 and Tier 4)



BAA5796, Knossos Etagere (nos-uhs)

Nature's hand is evident throughout the Knossos Etagere, named for the ancient Minoan civilization that predates modern Santorini. Five tiers of veneered oak are suspended within a metal frame crafted from sculpted, cast bronze.

Standard Finish: Scorch Shelves with Temper Legs

Optional Finishes: Finish Program (Tier 1, Tier 2, Tier 3 and Tier 4)



BAA5708, Mayon Bedside Table (mah-yawn)

The oval-shaped Mayon Bedside Table shares its name with an active volcano in the Phillipines known for its perfect conical structure. Capturing the fluid energy of lava, its molten metallic base in cast bronze supports drawers in richly grained oak veneer with bronze hardware.

Standard Finish: Smolder with Magma Base and Hraun Hardware

Optional Finishes: Finish Program (Tier 1, Tier 2, Tier 3 and Tier 4)



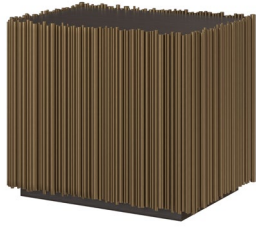
BAA5709, Malia Bedside Table (muh-lee-uh)

The Malia Bedside Table displays one of this collection's trademark design cues: the pairing of richly grained oak veneer with a molten metallic base in cast bronze that evokes the fluid energy of lava. Named after the lava dome on the island of Crete, it is a strong, yet elegant expression of natural materials and their innate beauty.

Standard Finish: Smolder with Magma Base and Hraun Hardware, featuring Haze Accents

Optional Finishes: Finish Program (Tier 1, Tier 2, Tier 3 and Tier 4)





BAA5710, Lahar Bedside Table (lah-hahr)

The Lahar Bedside Table has a cascading, linear movement that was inspired by the blend of earth and water that flows down volcanoes. Behind its uninterrupted doveled face, you will find shelves and storage that are ideal for bedside use.

Standard Finish: Hraun



BAA5700, Surtsey Dresser (surt-see)

The Surtsey Dresser feels contemporary and new, like the recently formed volcanic island in Iceland that inspired its name. A molten metallic base in cast bronze exhibits the fluid energy of lava, while richly grained oak veneer and bronze hardware punctuate the piece with a modern flair.

Standard Finish: Smolder with Magma Base and Hraun Hardware, featuring Haze Accents

Optional Finishes: Finish Program (Tier 1, Tier 2, Tier 3 and Tier 4)



BAA5735, Vulcan Dining Table (vuhl-kuhn)

The Vulcan Dining Table draws inspiration from multiple sources, including the Roman god of fire and the 600-foot volcano that rises from the New Mexico desert. It features a bronze base with the fluid energy of lava, supporting a grained oak veneered tabletop to express both strength and natural elegance.

Standard Finish: Smolder with Magma Accents and Haze Base

Optional Finishes: Finish Program (Tier 1, Tier 2, Tier 3 and Tier 4)



BAA5736, Aitne Dining Table - Wood Top (et-nee)

Like the newly formed metals created by Mt. Etna in Sicily, the Aitne Dining Table - Wood Top springs forth with an artistic display of cast bronze. This elegant, circular table merges oak and bronze in a unified gesture of modern design.

Standard Finish: Singe Top with Anneal Base

Optional Finishes: Finish Program (Tier 1, Tier 2, Tier 3 and Tier 4)





BAA5731, Aitne Dining Table - Stone Top (et-nee)

Like the newly formed metals created by Mt. Etna in Sicily, the Aitne Dining Table - Stone Top springs forth with an artistic display of cast bronze. This elegant, circular table merges a leathered Belgian Bluestone top with a corduroy textured edge and cast bronze in a unified gesture of modern design.

Standard Finish: Leathered Belgian Bluestone Top with Anneal Base



BAA5732, Hiero Dining Table - Wood Top (hi-ro)

The Hiero Dining Table - Wood Top pushes the boundaries of craftsmanship and materiality, featuring an oak top for timeless appeal. Its graceful base is made from cast bronze, nodding to the sacred volcano in the Canary Islands that inspired its name.

Standard Finish: Element Top with Temper Base

Optional Finishes: Finish Program (Tier 1, Tier 2, Tier 3 and Tier 4)



BAA5737, Hiero Dining Table - Stone Top (hi-ro)

The Hiero Dining Table - Stone Top pushes the boundaries of craftsmanship and materiality, featuring a leathered Belgian Bluestone top with a corduroy textured edge. Its graceful base is made from cast bronze, nodding to the sacred volcano in the Canary Islands that inspired its name.

Standard Finish: Leathered Belgian Bluestone Top with Temper Base



BAA5733, Taupo 120" Rectangle Dining Table (tou-poh)

The Taupo 120" Rectangle Dining Table is inspired by the volcanic region on New Zealand's North Island, home to unique geological patterns, waterfalls and hot springs. The design explores the merging of oak veneer and cast bronze, with a bronze detail emerging through the tabletop to display the beauty and imagination of contrasting elements.

Standard Finish: Singe Top with Anneal Base

Optional Finishes: Finish Program (Tier 1, Tier 2, Tier 3 and Tier 4)



BAA5734, Otago 120" Rectangle Dining Table (oh-taa-goh)



Contrasting elements come together to form the Otago 120" Rectangle Dining Table, inspired by a volcanic region on New Zealand's South Island. The materiality of cast bronze meets the softer, organic patterns of oak to create a spectacular expression of artistry, with bronze details subtly emerging from the tabletop.

Standard Finish: Singe Top with Temper Base

Optional Finishes: Finish Program (Tier 1, Tier 2, Tier 3 and Tier 4)

BAA5738, Taupo 144" Rectangle Dining Table (tou-poh)



The Taupo 144" Rectangle Dining Table is inspired by the volcanic region on New Zealand's North Island, home to unique geological patterns, waterfalls and hot springs. The design explores the pairing of oak veneer and cast bronze, with a bronze detail emerging through the tabletop to display the beauty and imagination of contrasting elements.

Standard Finish: Singe Top with Anneal Base

Optional Finishes: Finish Program (Tier 1, Tier 2, and Tier 4)

BAA5739, Otago 144" Rectangle Dining Table (oh-taa-goh)



The Otago 144" Rectangle Dining Table explores the pairing of oak veneer and cast bronze, with a bronze detail emerging through the tabletop to display the beauty and imagination of contrasting elements. It is inspired by a region on New Zealand's South Island that features mountains, glacial lakes and dormant volcanoes.

Standard Finish: Singe Top with Temper Base

Optional Finishes: Finish Program (Tier 1, Tier 2, Tier 3 and Tier 4)



BAA5740, Fira Dining Chair (fee-ra)

The Fira Dining Chair is a classic and fluid form that has the solidity of quickly cooled earth following a lava flow. Named after the ancient Greek city that was lost to a volcanic eruption, this elegant piece pairs a deep bronze plated finish on cast aluminum with sophisticated upholstery.

Standard Finish: Anneal





BAA5741, Pollara Dining Chair (poh-lah-rah)

Named for the ancient Sicilian island lost to a volcanic eruption, the Pollara Dining Chair is a classic and fluid form embodying the solidity of quickly cooled earth following a lava flow. This stylish choice pairs a bronze plated finish on cast aluminum with soft, sophisticated upholstery.

Standard Finish: Temper



BAA5743, Juno Dining Chair (joo-noh)

Dramatic, tapering and high-backed, the Juno Dining Chair has the presence of its namesake goddess who was once revered as the queen of heaven in ancient days. This fully upholstered chair reimagines a classic form into a statement piece. Hidden casters provide ease of movement on hardwood and carpeted surfaces alike.



BAA5745, Vesta Dining Chair (ves-tuh)

Finely upholstered with an exposed maple base, the Vesta Dining Chair captures the purity and refinement of its namesake goddess, known as the guardian of the hearth and home.

Optional Finishes: Finish Program (Tier 1, Tier 2 and Tier 4)



BAA5744, Teide Counter Stool (tey-deh)

The design of the Teide Counter Stool is inspired by Mt. Teide, an active volcano and the highest summit in Spain. Like the volcano itself, the foundation of the stool is meant to reflect the vertical bands at its base. By contrast, its top layer is represented by plush upholstery, offering both form and comfort. The base is crafted in bronze plated stainless steel in the Hraun finish.

Standard Finish: Hraun

Optional Finishes: Finish Program (Tier 1, Tier 2, Tier 3 and Tier 4)





BAA5746, Fira Counter Stool (fee-ra)

The Fira Counter Stool pairs a deep bronze plated finish on cast aluminum with sophisticated upholstery, evoking the elegance of the ancient Greek city that was lost to a volcanic eruption. This classic and fluid form displays the solidity of quickly cooled earth following a lava flow.

Standard Finish: Anneal



BAA5748, Pollara Counter Stool (poh-lah-rah)

The Pollara Counter Stool is a stylish option that pairs a bronze plated finish on cast aluminum with elevated upholstery. Named for the ancient Sicilian island lost to a volcanic eruption, its classic and fluid form represents the solidity of quickly cooled earth following a lava flow.

Standard Finish: Temper



BAA5747, Fira Barstool (fee-ra)

The Fira Barstool pairs a deep bronze plated finish on cast aluminum with sophisticated upholstery, evoking the elegance of the ancient Greek city that was lost to a volcanic eruption. This classic and fluid form displays the solidity of quickly cooled earth following a lava flow.

Standard Finish: Anneal



BAA5749, Pollara Barstool (poh-lah-rah)

The Pollara Barstool is a stylish option that pairs a bronze plated finish on cast aluminum with elevated upholstery. Named for the ancient Sicilian island lost to a volcanic eruption, its classic and fluid form represents the solidity of quickly cooled earth following a lava flow.

Standard Finish: Temper





BAA5801C, Lull Lounge Chair (luhl)

The Lull Lounge Chair captures the essence of a quiet moment: inviting, comfortable and imaginative. This generously scaled chair features a square tufted seat cushion for a modern, sophisticated look.



BAA5802C, Vesuvia Lounge Chair (vuh-soo-vee-a)

Like the monumental presence of Mt. Vesuvius that overlooks the Amalfi Coast, the Vesuvia Lounge Chair looms large with grandly scaled proportions. Upon sitting, the chair design is immediately enveloping, with a tufted inback and sophisticated upholstery atop a bronze base.

Standard Finish: Hraun



BAA5803C, Hercule Swivel Lounge Chair (hur-kyuhl)

Taking its name from the ancient Roman city of Herculaneum, the Hercule Swivel Lounge Chair features a remarkable cast bronze base that nods to the immense power of the earth. The chair is fully upholstered with an open-arm frame that creates visual interest.

Standard Finish: Ferrous



BAA5804C, Caldera Swivel Lounge Chair (kal-der-uh)

Inspired by the cauldron-shaped formation left behind by a volcanic eruption, the Caldera Swivel Lounge Chair is a study in flowing curves and organic shaping. Pairing style and strength, its remarkable cast bronze base supports a powerfully designed silhouette with feminine elegance.

Standard Finish: Ferrous





BAA5805C, Buoyant Lounge Chair (boi-uhnt)

Inspired by the floating molten rock that causes volcanic eruptions, the Buoyant Lounge Chair is comfortable enough to evoke the feeling of floating above the ground. Its bronze base provides a firm foundation for plush upholstery, which rests effortlessly above.

Standard Finish: Magma Accent with Hraun Base



BAA5810C, Fira Lounge Chair (fee-ra)

Named after the ancient Greek city that was lost to a volcanic eruption, the low-profile Fira Lounge Chair pairs cast bronze with sophisticated upholstery. Its classic and fluid form displays the solidity of quickly cooled earth following a lava flow.

Standard Finish: Anneal



BAA5811C, Pollara Lounge Chair (poh-lah-rah)

The Pollara Lounge Chair pairs classic design with modern materials including cast bronze and sophisticated upholstery. Named for the ancient Sicilian island lost to a volcanic eruption, the chair represents a fluid form with the solidity of quickly cooled earth following a lava flow.

Standard Finish: Temper



BAA5801CS, Lull Chaise (luhl)

Capturing the essence of a quiet moment, the Lull Chaise offers an inviting, comfortable experience with an imaginative design. A square tufted bench cushion with a pair of bolsters anchored with leather strapping and bronze buttons create a modern, sophisticated look.

Standard Finish: Hraun Accent with L2500 Leather Strapping





BAA5801CS-BTI, Lull Chaise - BTI (luhl)

Capturing the essence of a quiet moment, the Lull Chaise - BTI offers an inviting, comfortable experience with an imaginative design. A square tufted bench cushion with a pair of bolsters anchored with leather strapping and bronze buttons create a modern, sophisticated look.

Standard Finish: Hraun Accent with L2500 Leather Strapping



BAA5801S, Lull Sofa (luhl)

The Lull Sofa offers a generously scaled retreat that beckons for a quiet moment of daydreaming or relaxation. Offering a modern and sophisticated look, the sofa is expertly crafted with a square tufted bench cushion and a pair of bolsters with leather strapping and bronze buttons.

Standard Finish: Hraun Accent with L2500 Leather Strapping



BAA5801S, Lull Sofa - BTI (luhl)

The Lull Sofa - BTI offers a generously scaled retreat that beckons for a quiet moment of daydreaming or relaxation. Offering a modern and sophisticated look, the sofa is expertly crafted with a square tufted bench cushion and a pair of bolsters with leather strapping and bronze buttons.

Standard Finish: Hraun Accent with L2500 Leather Strapping



BAA5806S, Buoyant Sofa (boi-uhnt)

With flowing lines and perfect proportions, the Buoyant Sofa offers a comfortable experience that evokes the sensation of floating. The gentle slope of the arms creates clean and elegant lines, while its bench seat rests effortlessly above the sophisticated frame.





BAA5806S-BTI, Buoyant Sofa - BTI (boi-uhnt)

With flowing lines and perfect proportions, the Buoyant Sofa offers a comfortable experience that evokes the sensation of floating. The gentle slope of the arms creates clean and elegant lines, while its bench seat rests effortlessly above the sophisticated frame.



BAA5720Q/K/CK, Viscous Bed (vis-kuhs)

The Viscous Bed is notable for its fully upholstered channels of varying sizes, a design feature inspired by the slow and deliberate flow of lava down a volcano's steep slopes. The bed gracefully captures the gentler side of one of nature's most powerful forces.



BAA5721Q/K/CK, Fossier Bed (foss-er)

The gathered and pleated fabric of the Fossier Bed is inspired by the linear fissures left by volcanic formations on the earth's surface to create a modern eye-catching effect.



BAA5812B, Catania End of Bed Bench (kah-tah-nyah)

The Catania End of Bed Bench reimagines a classic form in upholstery and cast bronze. Named for the ancient Sicilian port city near Mt. Etna, the bench evokes the solidity of volcanic rock.

Standard Finish: Anneal





BAA5813B, Stabiae End of Bed Bench (stah-bee-ay)

Inspired by the luxurious ancient villas of Stabiae, a seaside village destroyed by Mt. Vesuvius, the Stabiae End of Bed Bench is crafted from cast bronze that evokes the solidity of quickly cooled volcanic rock.

Standard Finish: Temper



BAA5814B, Copilco Bunching Bench (koh-peel-koh)

The Copilco Bunching Bench takes its name from the Mesoamerican ceremonial site that stood near Mexico City nearly 2,000 years ago. Made with cast bronze, the bench boasts the solidity of rapidly cooled volcanic rock.

Standard Finish: Anneal



BAA5815B, Oplontis Bunching Bench (oh-plon-tees)

Home to one of the most extravagant Roman villas ever uncovered, the lost village of Oplontis in southern Italy inspired the Oplontis Bunching Bench. This classic form is made from cast bronze and feels strong and substantial, like rapidly cooled rock after a volcanic eruption.

Standard Finish: Temper



BAA5800O, Teide Stool (tey-deh)

The design of the Teide Stool is inspired by Mt. Teide, an active volcano and the highest summit in Spain. Like the volcano itself, the foundation of the stool is meant to reflect the vertical bands at its base. By contrast, its top layer is represented by plush upholstery, offering both form and comfort. The base is crafted in bronze plated stainless steel in the Hraun finish.

Standard Finish: Hraun

Optional Finishes: Finish Program (Tier 1, Tier 2, Tier 3 and Tier 4)





BAA5712, Lahar Rectangle Mirror (lah-hahr)

Cascading and linear, the Lahar Rectangle Mirror is framed by an uninterrupted doweled pattern that evokes the blend of earth and water that flows down volcanoes. This elegant, large-scale design has the versatility to grace a living room, entryway or beyond.

Standard Finish: Hraun



BAA5713, Lahar Square Mirror (lah-hahr)

The elegant and large-scale Lahar Square Mirror has the versatility to grace a living room, entryway or beyond. Cascading and linear, it is framed by an uninterrupted doweled pattern that evokes the blend of earth and water that flows down volcanoes.

Standard Finish: Hraun



BAA5714, Malia Rectangle Mirror (muh-lee-uh)

Exemplifying simple strength and beauty, the Malia Rectangle Mirror features a cast bronze frame that is reminiscent of flowing lava. Named after the lava dome on the island of Crete, the mirror provides the perfect accompaniment to the Malia Bedside Table.

Standard Finish: Magma



BAASF100, Onyx Table Lamp - Short (on-iks)

The Onyx Table Lamp - Short is a testament to the idea that true beauty can emerge from heat and pressure. Crafted from clean white onyx in a timeless and noble form, the lamp also features a functional brass element to accentuate the overall design.

Standard Finish: White Onyx





BAASF101, Onyx Table Lamp - Tall (on-iks)

Crafted from clean white onyx in a timeless and noble form, the Onyx Table Lamp - Tall is a testament to the idea that true beauty can emerge from heat and pressure. The design features a functional brass element to accentuate the overall aesthetic.

Standard Finish: White Onyx



BAASF102, Scoria Table Lamp (skor-ee-uh)

Carefully wrapped in genuine shagreen with textured brass accents, the Scoria Table Lamp is evocative of the dark volcanic rock that displays a uniquely bubbled texture. Its pull-chain design is inspired by the chimera, a fire-breathing creature from Greek mythology that represents untamed power.

Standard Finish: Gray Asfalto



BAASF103, Eld Table Lamp (eld)

Graceful and refined, the Eld Table Lamp features a thoughtfully designed pull-chain that adds a dash of visual interest to its otherwise symmetrical form. The lamp, crafted in a blackened brass finish, takes its name from the Icelandic word for “fire.”

Standard Finish: Sear



BAASF200, Eld Floor Lamp (eld)

The Eld Floor Lamp, crafted in a blackened brass finish, takes its name from the Icelandic word for “fire.” Graceful and refined, the lamp features a thoughtfully designed pull-chain that adds a dash of visual interest to its otherwise symmetrical form.

Standard Finish: Sear



New Finishes:



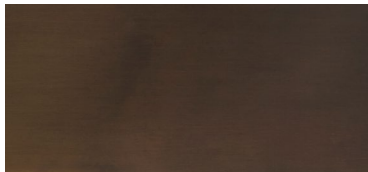
Anneal
(uh-neel)



Element
(el-uh-muhnt)



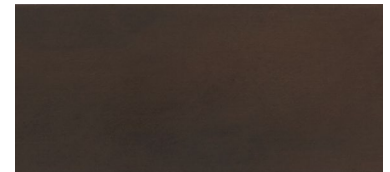
Ferrous
(fer-uhs)



Flow
(floh)



Gray Asfalto
(gray ahs-fahl-toh)



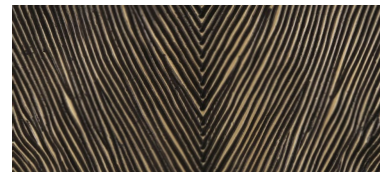
Haze
(heyz)



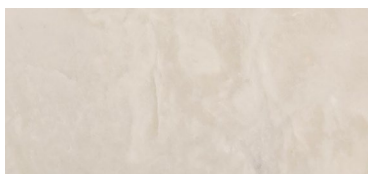
Hraun
(rh-ow-n)



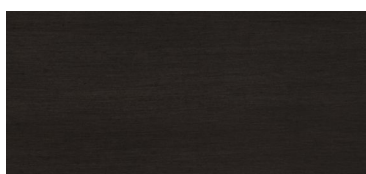
Leathered Belgian Bluestone
(bel-juhn bloo-stohn)



Magma
(mag-muh)



Polished
Namibia White Marble
(nuh-mib-ee-uh wahyt)



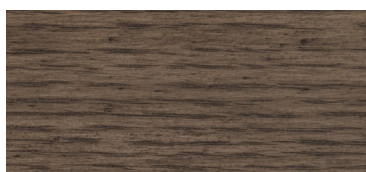
Scorch
(skawrch)



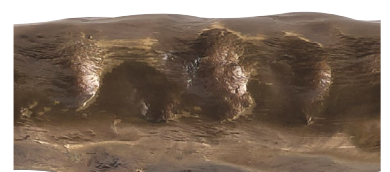
Sear
(seer)



Singe
(sinj)

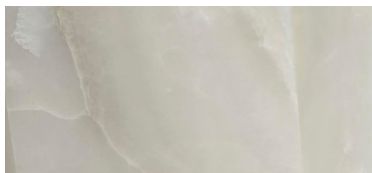


Smolder
(smohl-der)



Temper
(tem-per)

New Finishes:



White Onyx
(wahyt on-iks)